

FIG. 2.

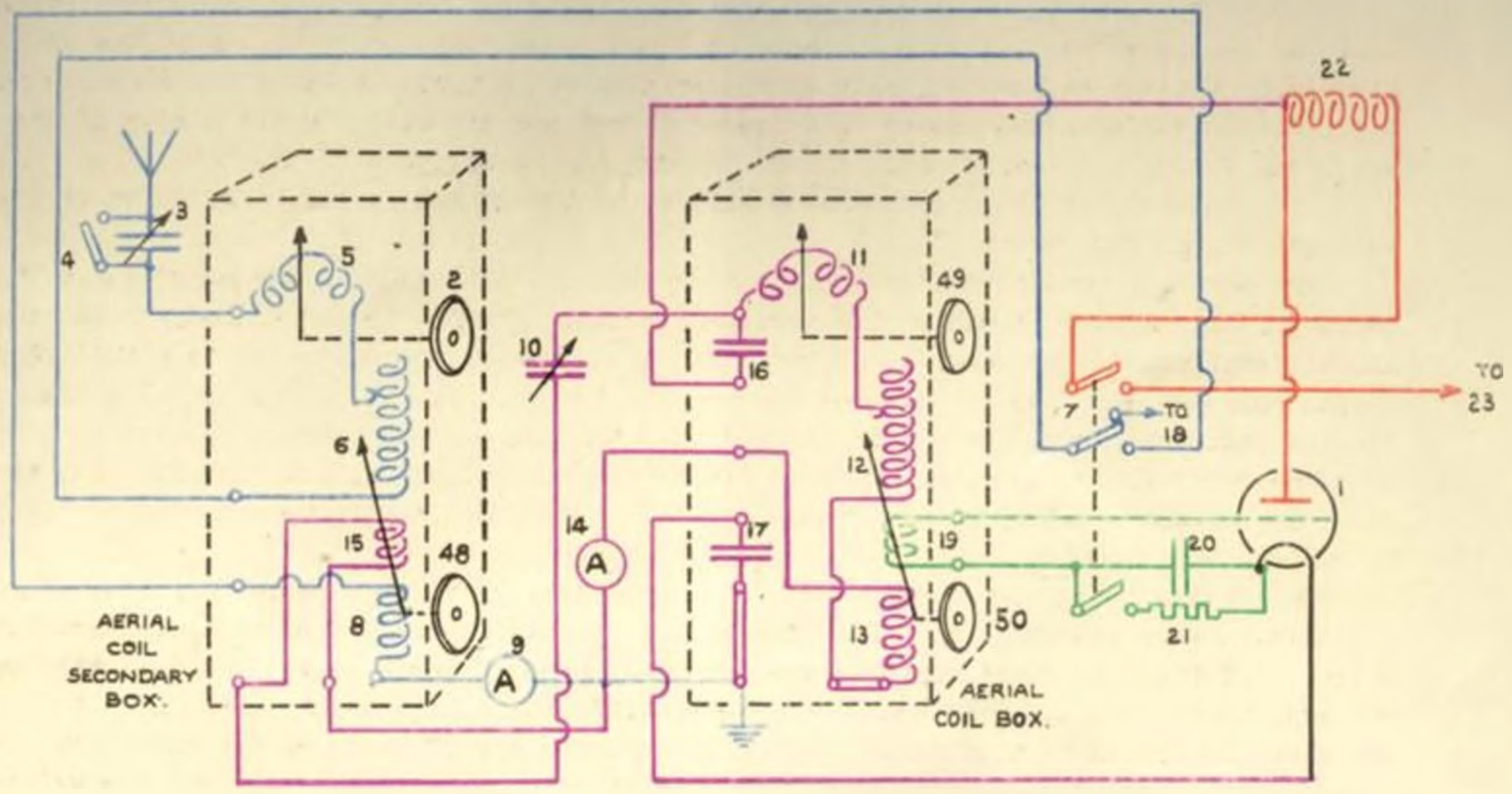


FIG. C.

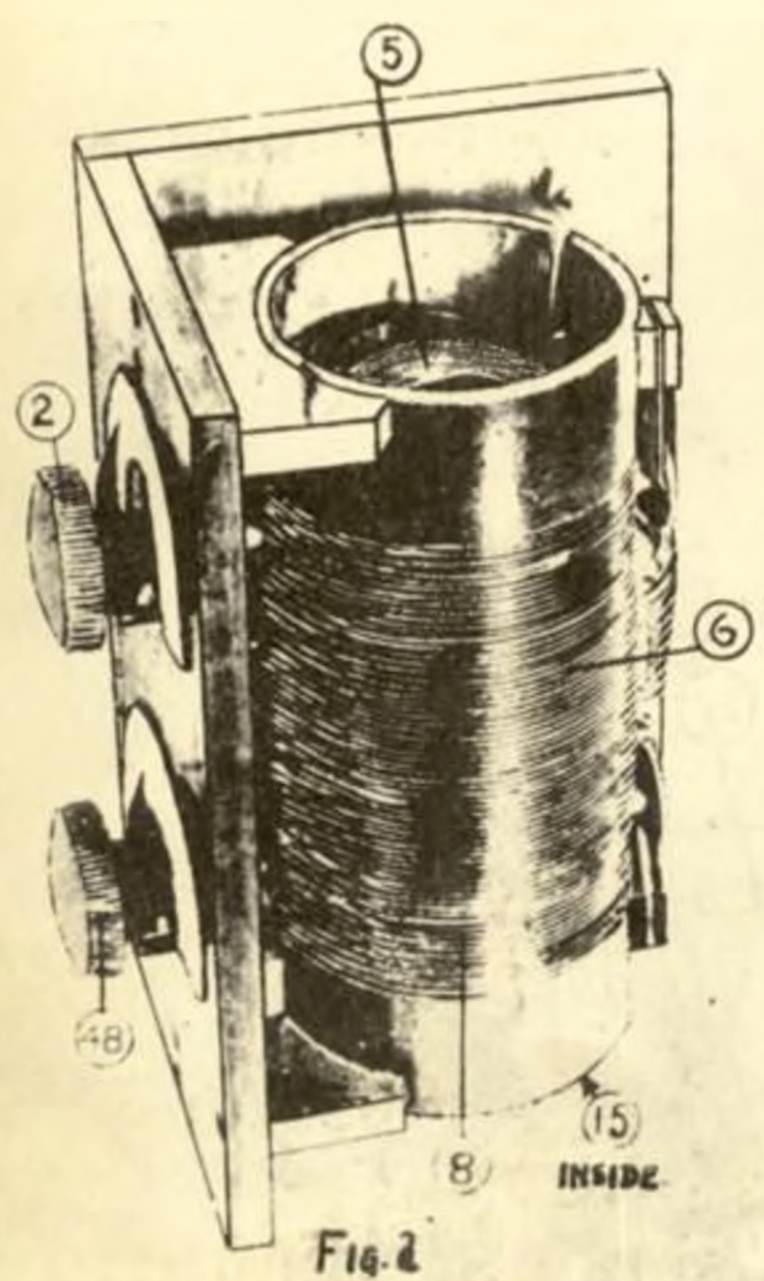


FIG. d

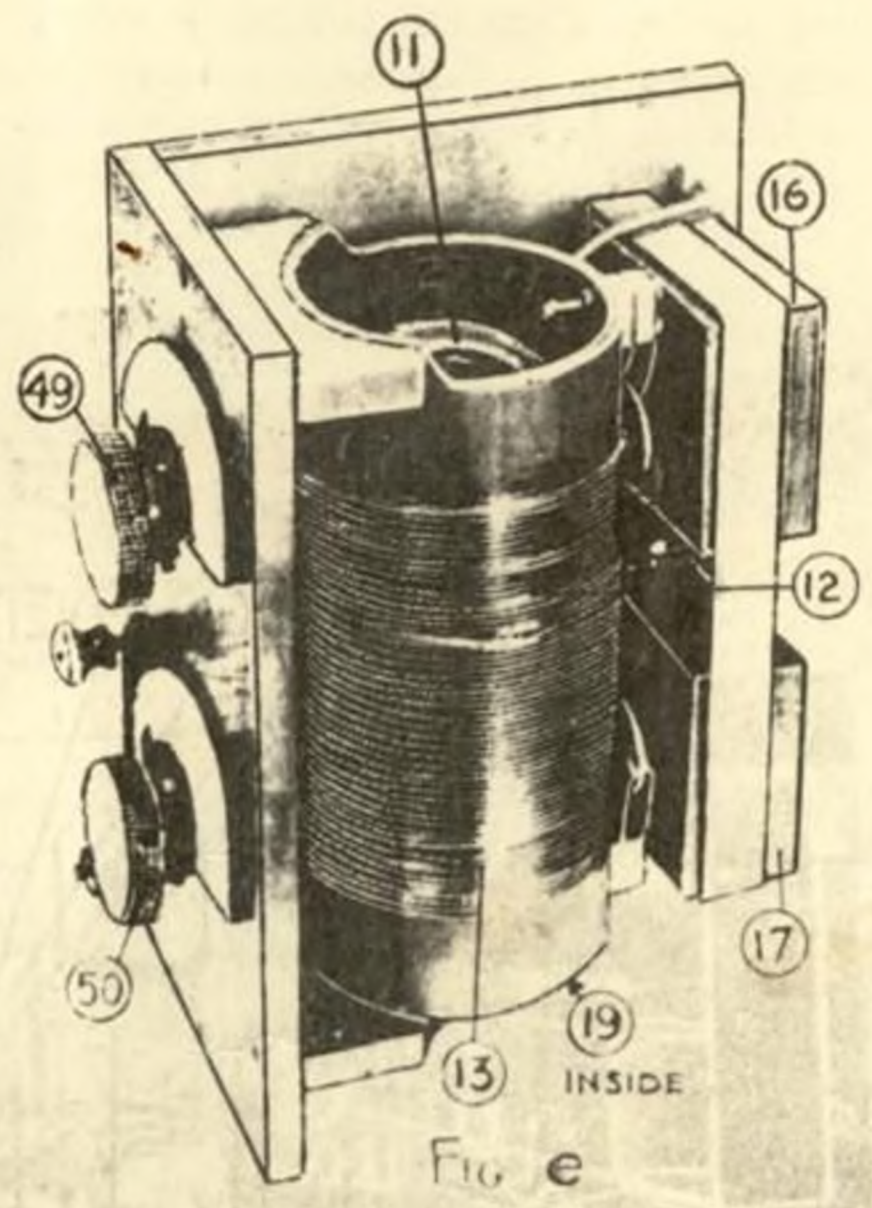
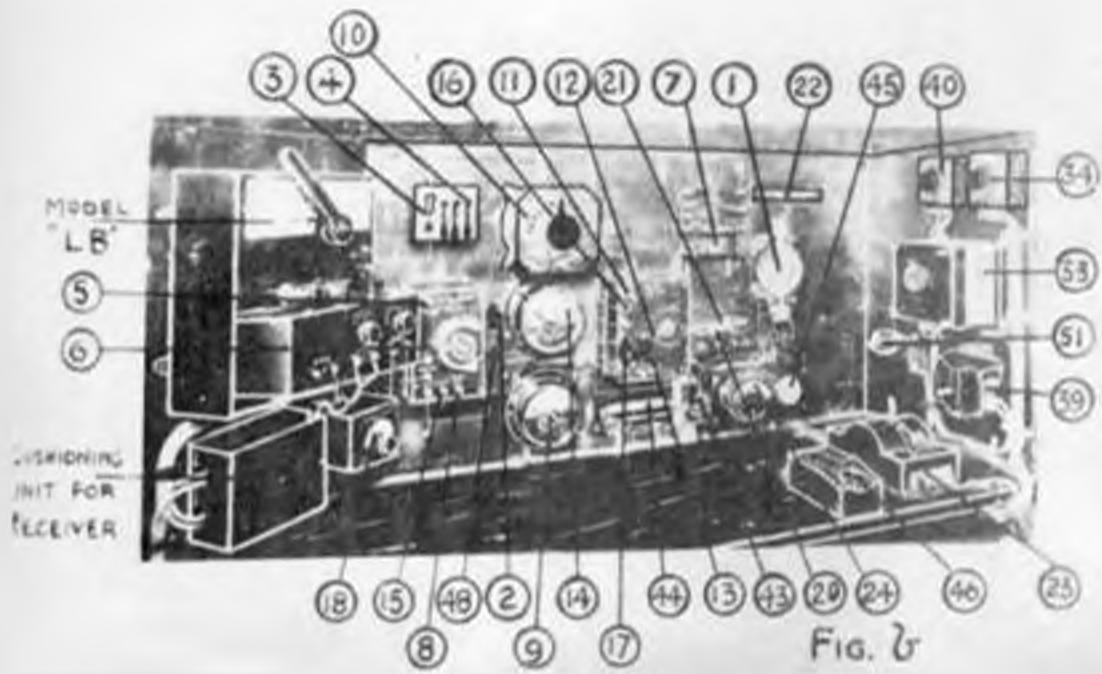


FIG. e



- 1
- 2
- 3
- 4
- 5
- 6
- 7
- 8
- 9
- 10
- 11
- 12
- 13
- 14
- 15
- 16
- 17
- 18
- 19
- 20
- 21
- 22
- 23
- 24
- 25
- 26
- 27
- 28
- 29
- 30
- 31
- 32
- 33
- 34
- 35
- 36
- 37
- 38
- 39
- 40
- 41
- 42
- 43
- 44
- 45
- 46
- 47
- 48
- 49
- 50
- 51
- 52
- 53
- 54
- 55
- 56
- 57
- 58

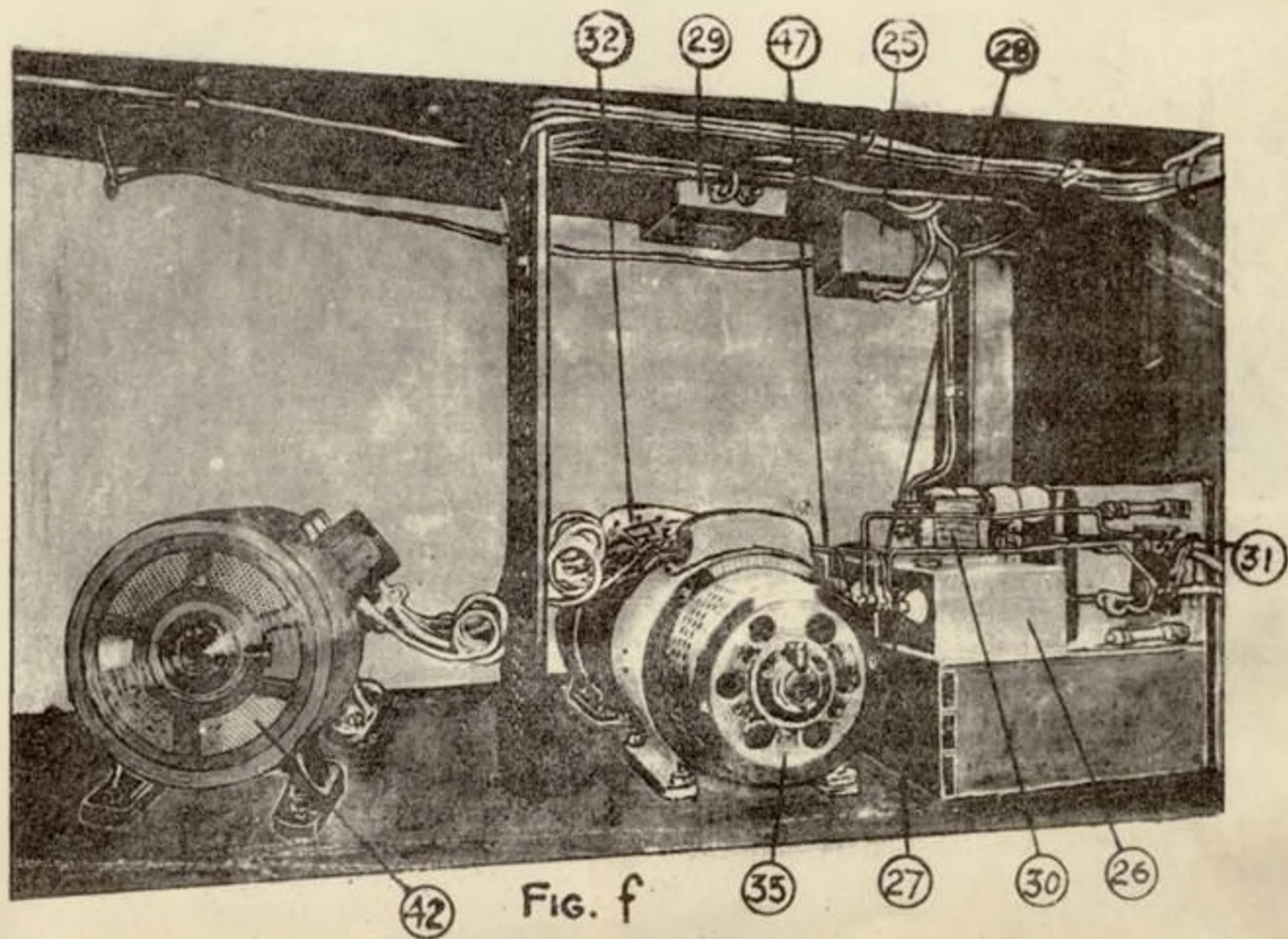
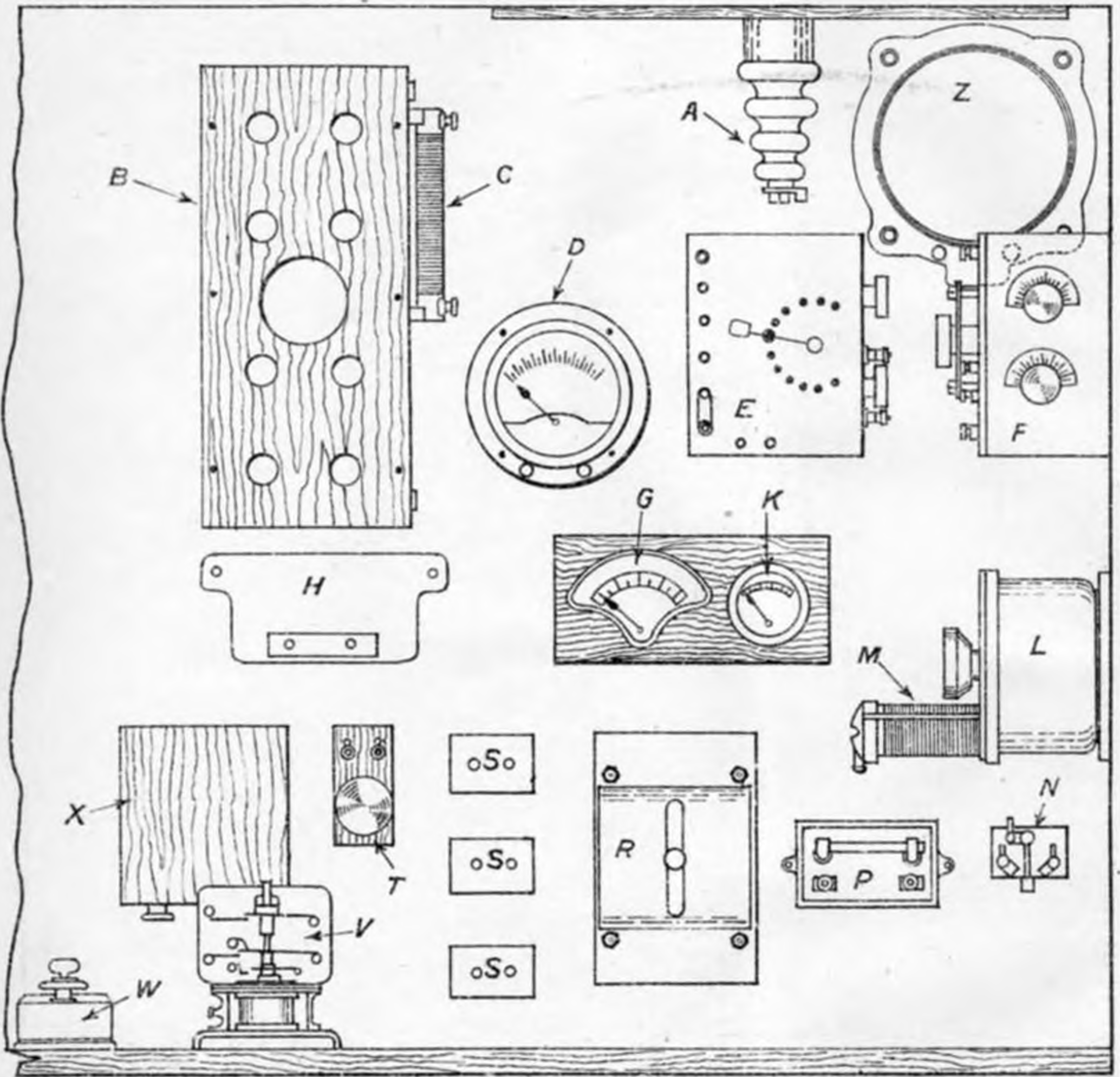


FIG. f

**GENERAL ARRANGEMENT OF INSTRUMENTS.**

Scale. - 1/8.



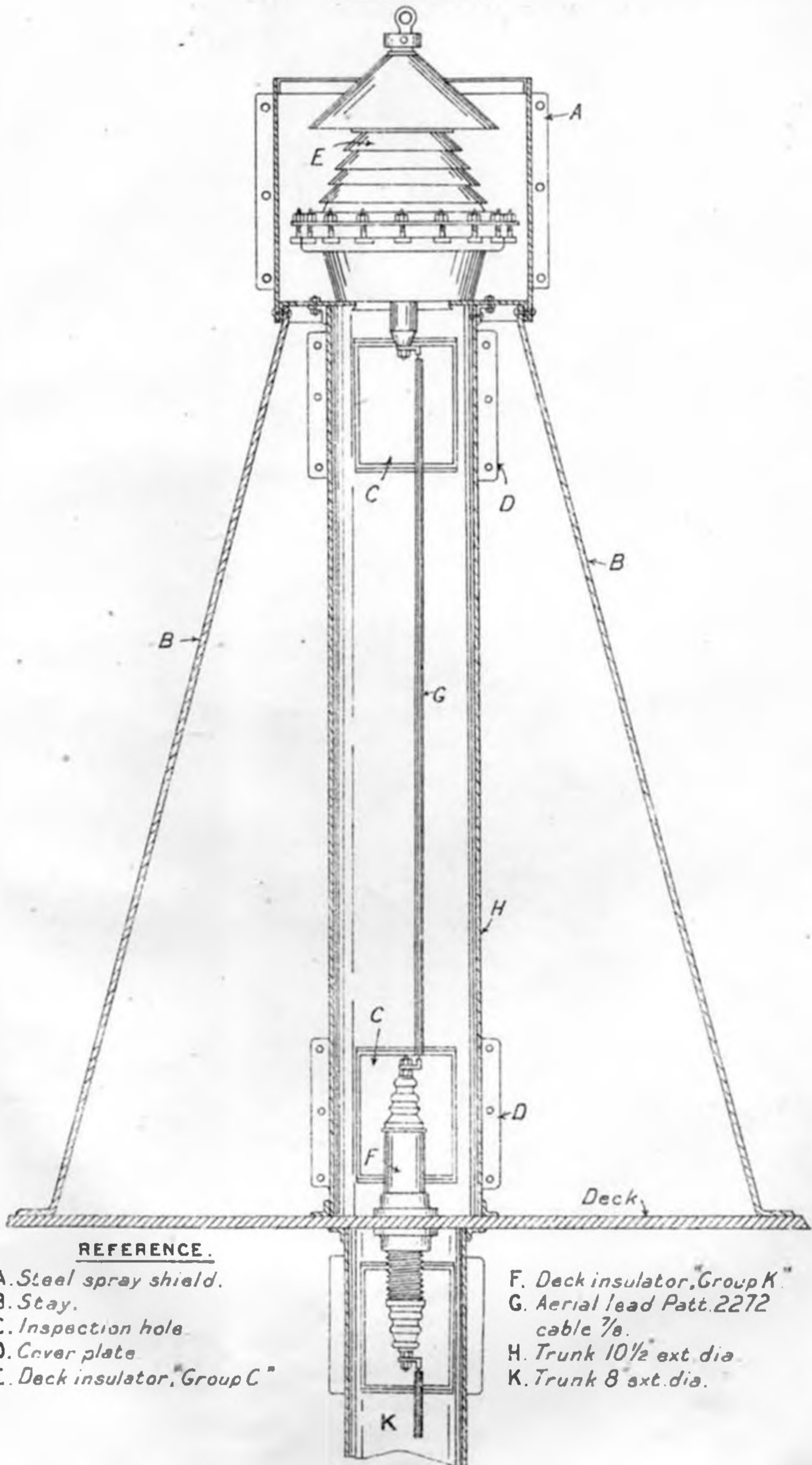
**REFERENCE.**

PATT.N <sup>o</sup>		PATT.N <sup>o</sup>	
A	Deck Insulator.	M	4859 Resist. Adjust <sup>e</sup> 13ohms 5amps.
B	4856 Box for Valve Type 31.	N	1276A Switch 2 way.
C	4861 Coil Protecting Type 31.	P	4858 Cond <sup>sr</sup> Insul <sup>tg</sup> & Resist. Rod.
D	4860 Ammeter Aerial Type 31.	R	4899 Switch C.O. 2 pole 700 v.
E	4855 Coil, Aerial, Primary Type 31.	S	4546 Terminal Blocks, Single Pair.
F	4900 Coil, Aerial, Secondary Type 31.	T	4548 Lampholder on Wood Base.
G	4865 Voltmeter 0-800 volts.	V	4862 Key Magnetic, Type 31.
H	4865 Resistance for Voltmeter	W	2426 Key Morse.
K	4866 Voltmeter 0-25 volts.	X	974 Condenser for Morse Key.
L	2486A Condenser R. N <sup>o</sup> 7	Z	4898 Hot Wire Ammeter.

**FIG. 12.**

TOP OF AERIAL TRUNK.

SCALE. 1/12.



REFERENCE.

A. Steel spray shield.

B. Stay.

C. Inspection hole.

D. Cover plate.

E. Deck insulator, "Group C."

F. Deck insulator, "Group K."

G. Aerial lead Patt. 2272  
cable 7/8.

H. Trunk 10 1/2 ext dia.

K. Trunk 8 ext dia.

FIG. 9.

BOTTOM OF AERIAL TRUNK & EARTHING TERMINALS.

Scale, - 1/4.

REFERENCE.

<b>A</b>	<i>Patt. 4897. Insulator Porcelain.</i>
<b>B</b>	<i>Patt. 4872 Deck Fitting with Extension Piece.</i>
<b>C</b>	<i>Patt. 4874A Central Conductor or suitable Gunmetal Rod.</i>
<b>D</b>	<i>Earth Ring &amp; Cable Eye.</i>
<b>E</b>	<i>Earth Wires, - Patt. 611 Cable.</i>
<b>F</b>	<i>Portable Panel of W/T Cabinet.</i>

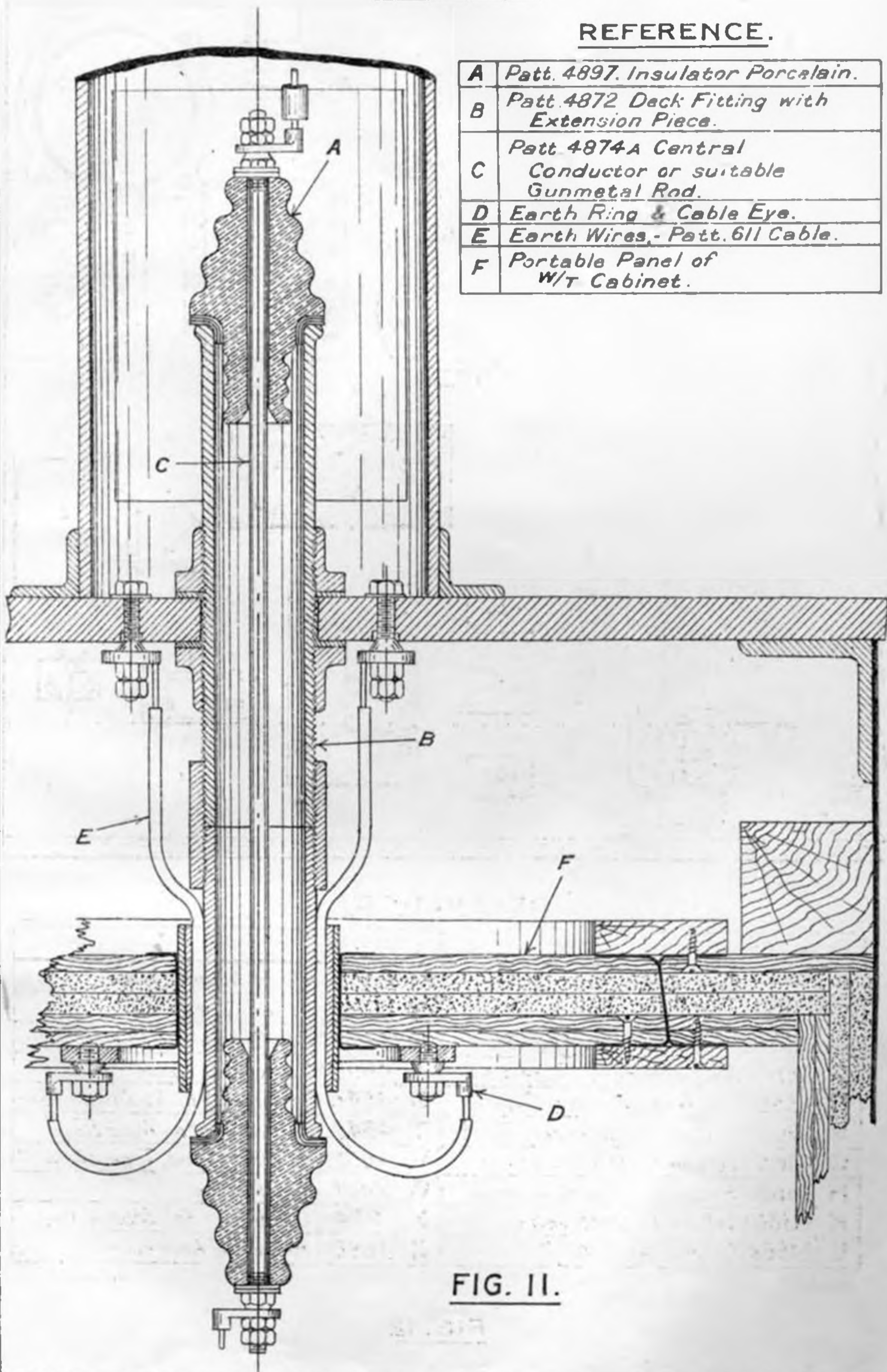
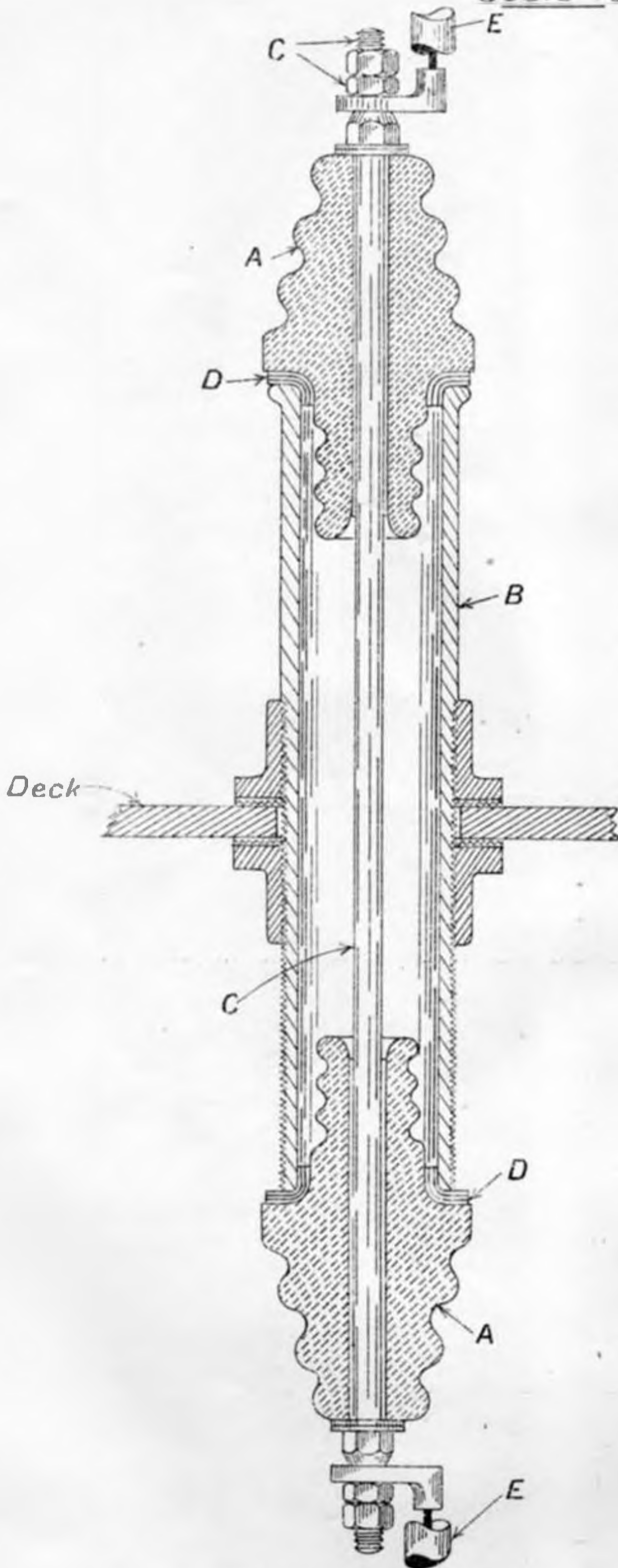


FIG. II.

# DECK INSULATOR, "GROUP K."

Scale  $\frac{1}{3}$



## REFERENCE

- A. *Patt 4897. Insulator Porcelain. TYPE 31A*
- B. *Patt 4872. Fitting Deck. TYPE 31.*
- C. *Patt. 4874 A Conductor Central for Deck. TYPE 31.*
- D. *Rubber Washers. cut from  $\frac{1}{16}$ " sheet.*
- E. *Aerial Conductor, Patt. 2272 Cable Electric*